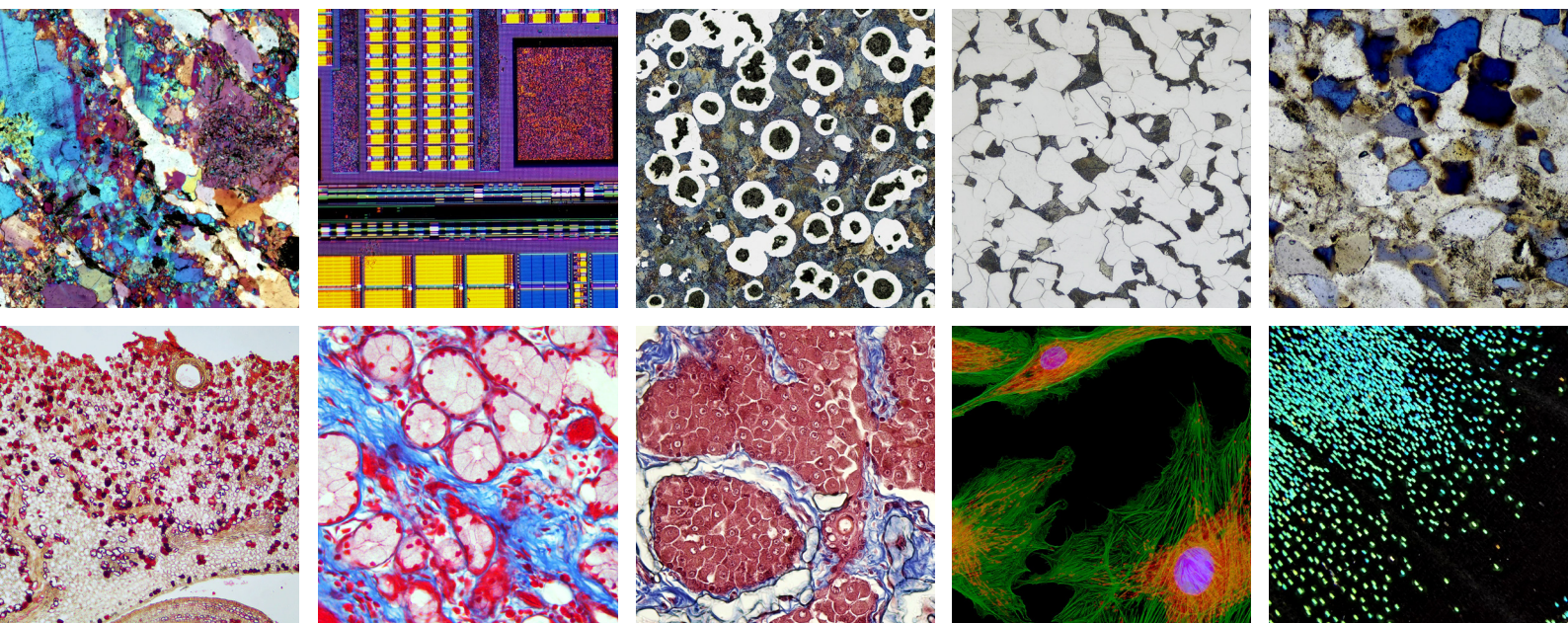


INNOVATED FOR TOP BRAND MICROSCOPES

Create a Stunning Microscope Imaging System for You



Option AS: Video Measuring Camera



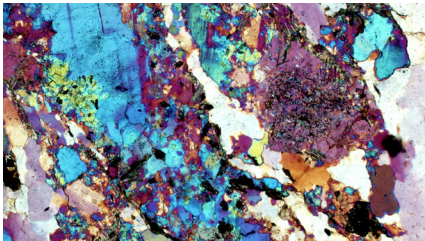
Key Product Features

- **Embedded Software:** Built-in KoPa View software (Linux-based OS) with HDMI output;
- **Ultra HD Display:** 4K (3840×2160) @60fps, supporting real-time preview, photo capture, and video recording;
- **Advanced Image Processing:** Focus stacking & image stitching (requires KoPa Capture Pro Windows software);
- **User-Friendly Operation:** Supports mouse/keyboard control and direct USB drive storage.

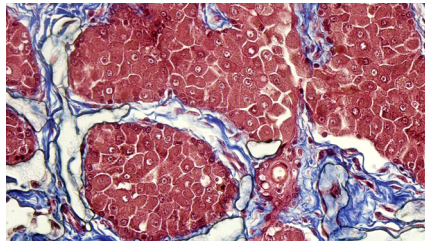
Dedicated image mode

The camera offers three specialized imaging modes (biological/industrial/fluorescence microscopy), each optimized for specific illumination and color temperature conditions. Its built-in color calibration firmware ensures accurate color rendition and precise imaging performance.

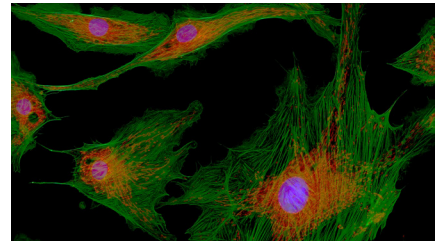
Industrial Microscope Image Mode



Biological Microscope Image Mode

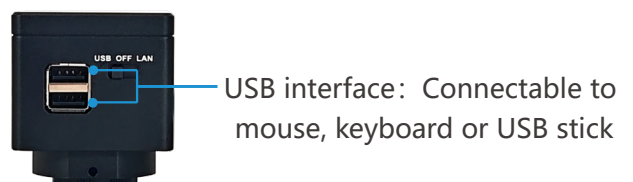
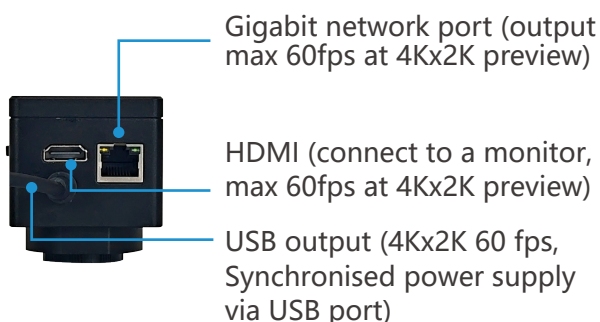


Fluorescence Microscope Image Mode



Multiple image output modes

Multi-Interface Output (AS model optional): USB + HDMI simultaneous output; Network + HDMI simultaneous output





HDMI

KoPa View



USB

KoPa Capture Pro



Network

KoPa Capture Pro



Dell 4K high color gamut display is recommended

Specifications

Models	MC2000-M
C-mount category	AS-C-08
Physical resolution	8.3MP
Image sensor	SONY IMX678 CMOS
Exposure mode	Rolling Shutter
Maximum resolution	3840×2160 (8,294,400 Pixels)
ISO sensitivity	Equivalent to 100-12800
Sensor size	1/1.8"
Pixel size	2μm×2μm
Spectral response	380-650nm
Exposure capability	Real-time auto and manual adjustment
Exposure time	10μs-10s
White balance	Real-time auto and manual RB adjustment
Preview resolution	3840×2160@60fps
Power supply	DC 5V 2A
A/D conversion bit depth	12bit
OSD and software	Embedded software: KoPa View; Windows software: KoPa Capture Pro;

Accessories, product dimensions and weight

» Standard Accessories

HDMI cable

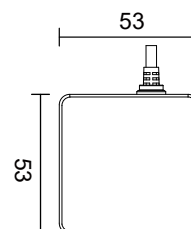
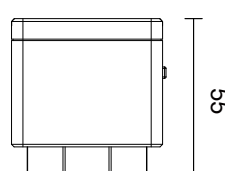


USB mouse



» Dimensions(Unit:mm)

Option AS: Net weight ≈0.3kg, 53x53x55mm



Certifications

1. Comply with FCC certification of The US Federal Communication Commission.
2. Comply with European (standard) safety CE certification.
3. Comply with the MIC certification issued by the Ministry of Internal Affairs and Communications of Japan (Electric Wave Method and Electro-Optical Communication Business Law).
4. Comply with JATE certification of Japanese telecommunications law directive.
5. Comply with the "Directive on the Restriction of the Use of Certain Hazardous Substances in Electrical and Electronic Equipment" (RoHS) Directives in accordance with EU legislation.

Evaluation object	Certification	Certificate File Name & Report	Certificate number & corresponding report number
WF01A (5G WiFi 11ac) module Certification	US FCC Report	SZEM180100024801-5G wifi RPT-WF01A FCC Report	SZEM180100024801
		SZEM180100024802-RT-WF01A FCC Report	SZEM180100024802
		Appendix A-Photographs of EUT Constructional Details for SZEM1801000248CR-FCC	SZEM1801000248CR
	US FCC ID Certification	2AFO3WF01A_NII-WF01A FCC ID	2AFO3WF01A
	EU CE report	SZEM180100024901 EN301489 RPT-WF01A CE Report	SZEM180100024901
		SZEM180100024902 WIFI5G RPT-WF01A CE Report	SZEM180100024902
	Japanese MIC Certification	CSRT180084-WF01A Japanese MIC Certification	CSRT180084
	Japanese JATE Certification	CSTT180018-WF01A Japanese JATE Certification	CSTT180018

Patented

Patent category	Patent name	Patent number
Design patent	Electronic eyepiece	ZL 2015 3 0193227.8
	Wireless electronic eyepiece	ZL 2015 3 0193223.X
	Electronic eyepiece with spectroscopic system	ZL 2019 3 0331144.9
	Microscope (with splitting prism camera)	ZL 2019 3 0717439.X
	Microscope with camera	ZL 2019 3 0717442.1
Utility model patents	WiFi microscope eyepiece	ZL 2015 2 0296469.4
	Electronic eyepiece	ZL 2015 2 0426409.X
	Wireless electronic eyepiece	ZL 2015 2 0426313.3
	Microscope with displayer	ZL 2019 2 0928962.1
	Electronic eyepiece with splitting prism system	ZL 2019 2 1022863.3

Software copyright

Category	Name of software	Platform	License number
Software copyright registration certificate	KoPa Capture Pro	Windows	2021SR1287730
	KoPa WiFi Lab AO	Android	2021SR1304520
	KoPa WiFi Lab	Android	2019SR0117768
		iOS	2019SR0028558
	KoPa View	Linux	2024SR1617066

KoPa® GuangZhou Ostec Electronic Technology Co.,Limited

Manufacturer: No.8 West Lane, Jiangcheng Road, Bangjiang East Village,Dalong street, Panyu District, Guangzhou, China.



High-Tech Enterprise certificate number:
GR202344009665



ISO9001 Verification No:00223Q26818R3S

The content of this leaflet has been reviewed by our company at the time of its release. Due to technological development, the actual product is subject to change without notice.

The names of other companies, product names, and trademarks **OLYMPUS** **Nikon** **Leica** **ZEISS** **Apple** **Android** **HarmonyOS** **W** **Q** **du** recorded on this leaflet are owned by their companies