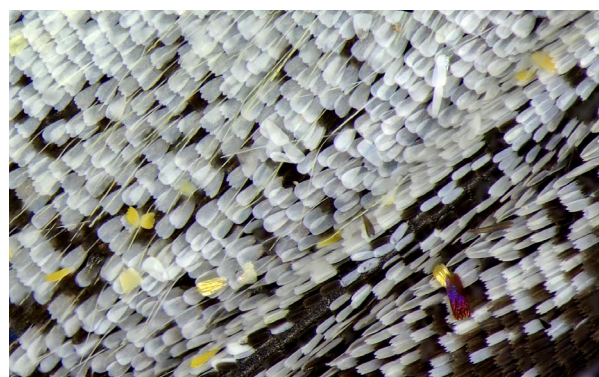
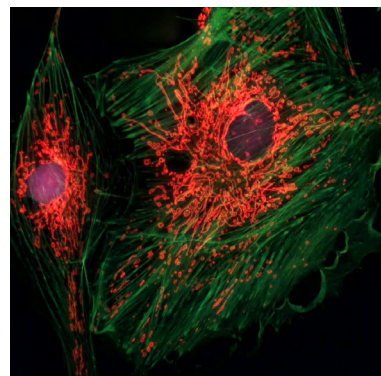
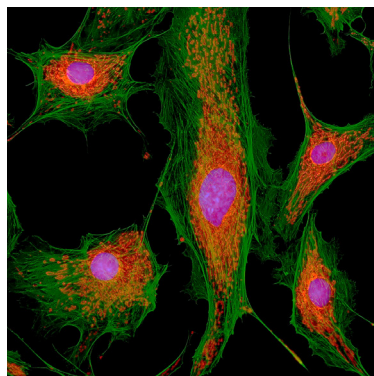
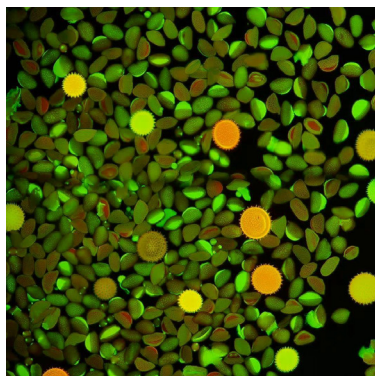
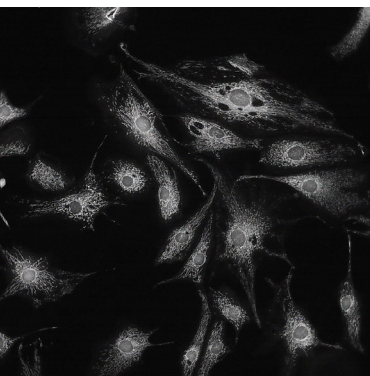
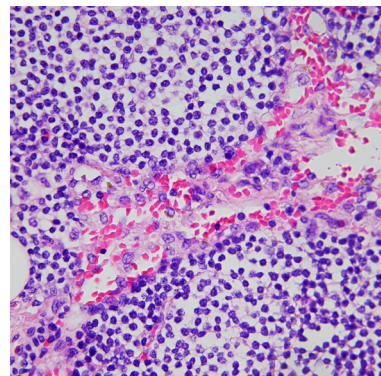
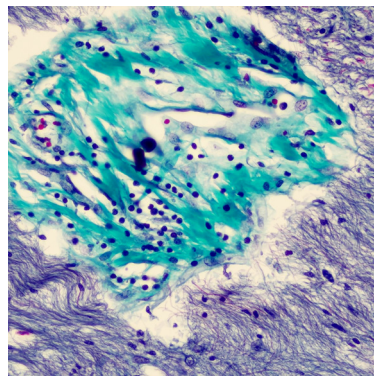
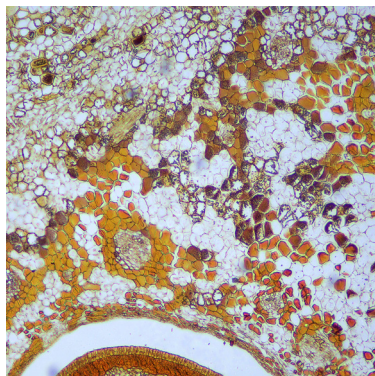
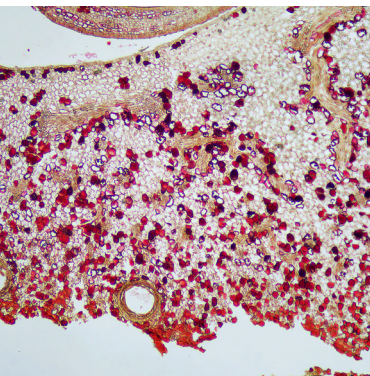


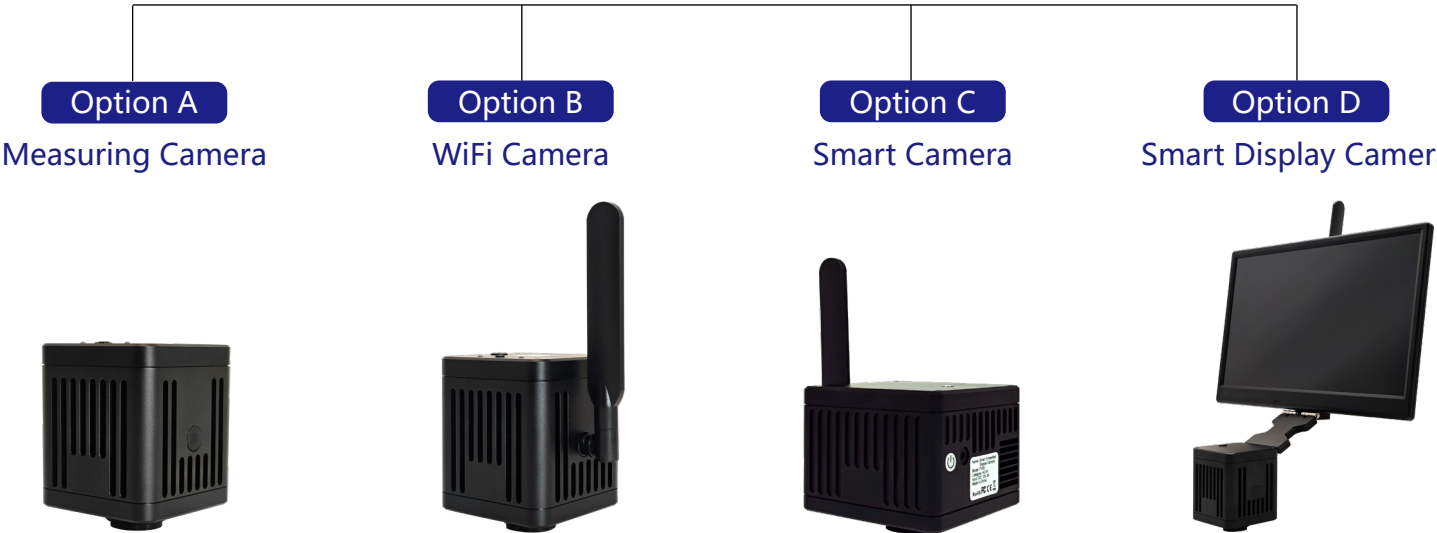
INNOVATED FOR TOP BRAND MICROSCOPES
Create a Stunning Microscope Imaging System for You



For Trinocular Stereo Microscopes



Applicable Models:
SZ61TR, SZX7, SZX10, SZX16



Function Comparison

● Standard ○ Optional – N/A

| | Option A | Option B | Option C | Option D |
|-------------------------------|----------|----------|----------|----------|
| Built-in Android OS | – | – | ● | ● |
| Pre-installed Office suits | – | – | ● | ● |
| 15.6"high color gamut monitor | – | – | – | ● |
| Image output methods | | | | |
| 5G WiFi | – | ● | ● | ● |
| USB | ● | ● | – | – |
| HDMI or DP | ● HDMI | ● HDMI | ● DP | ● DP |
| Network | ● | ● | – | – |

Option A,B

- HDMI output comes with embedded software: KoPa View;
- Max 60 fps for 3840x2160 (4Kx2K) real-time preview, support snapshot and record video;
- Exclusive image modes for biological , industrial, fluorescence microscope to have accurate color reproduction;
- Option A: USB+HDMI or Network+HDMI output;
Option B: USB+HDMI or WiFi+HDMI+Network output;
- Support depth of field fusion, stitching function (Windows software -KoPa Capture Pro);
- Support saving photos and videos to USB disk by using mouse and keyboard.

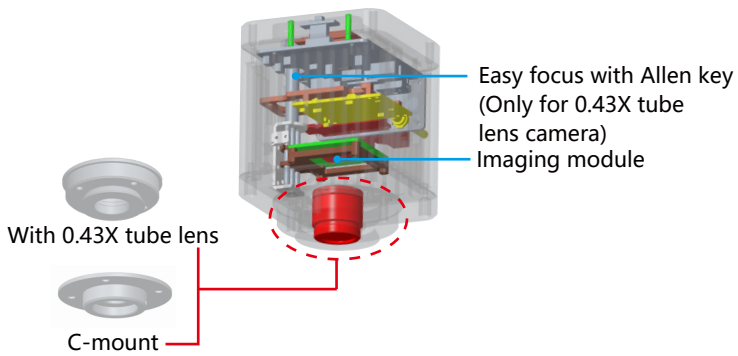
Option C,D

- Comes with a deeply customised Android operating system, with mobile version of office suit that including Word, Excel and PPT;
- Max 30 fps for 3840x2160 (4Kx2K) real-time preview, support snapshot and record video;
- Exclusive image modes for biological , industrial, fluorescence microscope to have accurate color reproduction;
- With depth of field fusion,manual focus, stitching , measurement and other functions;
- Option C: WiF+DP output;
Option B: local on-screen display or WiFi+DP output;
- Support saving photos and videos to USB-disk by using mouse and keyboard.

Option A Measurement Camera



Features & Benefits



USB output / Network output

Connect the computer via USB /network cable by using software" KoPa Capture Pro".



HDMI output

Connect the camera to a monitor or large TV via HDMI cable with OSD "KoPa View".





| | | |
|---|--|---|
| ① | USB output/ power supply | Two in one: data transmission and power supply. |
| ② | HDMI output | OSD "KoPa View" is available for image control .etc. |
| ③ | Network output | Connects to a computer via a network cable, suitable for wired long distance image transmission . |
| ④ | USB2.0 interface | Can be connected to a mouse , keyboard, USB stick. |
| ⑤ | Easy focus with allen key | Simple and precise focus adjustment for synchronization between eyepiece and monitor. |
| ⑥ | USB/OFF/Network working mode switching | Two working modes switching. |

Specifications

| | |
|-------------------------------|--|
| Models | MC2000 |
| C-mount category | AJ-C-08 |
| With 0.43X tube lens category | AJ-A-08 |
| Physical resolution | 8.3MP |
| Image sensor | SONY IMX678 CMOS |
| Sensor size | 1/1.8" |
| Pixel size | 2μm×2μm |
| A/D conversion bit depth | 12bit |
| Exposure time | 10us~10s |
| Exposure mode | Rolling shutter |
| ISO sensitivity | Equivalent to 100-12800 |
| Spectral response | 400-650nm |
| Exposure capability | Real-time automatic and manual adjustment |
| White balance | Real-time automatic and manual RB adjustment |
| Power supply | DC 5V 2A |
| Video recordings | 3840×2160@60fps 1920×1080@60fps |
| HDMI output | 3840×2160@60fps 1920×1080@60fps |
| USB output | 3840×2160@60fps 1920×1080@60fps |
| Network output | 3840×2160@60fps 1920×1080@60fps |
| Software and App | Windows Software: KoPa Capture Pro, OSD: KoPa View |

Accessories

HDMI cable

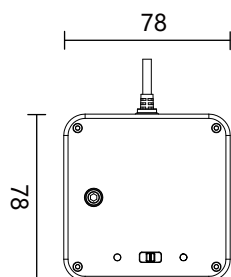


USB mouse

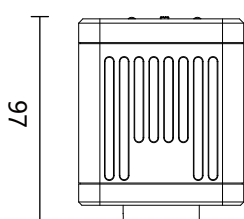


Dimensions(Unit:mm)

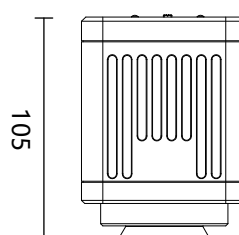
Net weight ≈0.8kg



Camera with C-mount



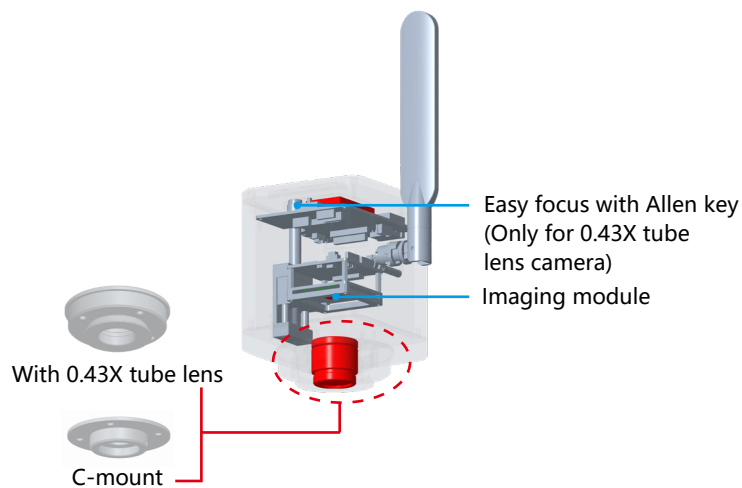
Camera with 0.43X adapter



Option B WiFi Camera



Features & Benefits



5G WiFi output, network output

Compatible with various devices and operating systems, including Windows, iOS, and Android. Mobile devices can access the system by scanning a QR code.

Connects to a computer via a network cable, suitable for wired long distance image transmission.



HDMI output

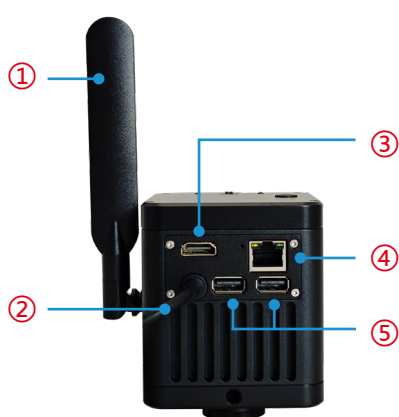
Connect the camera to a monitor or large TV via HDMI cable with OSD "KoPa View".





USB output

Connect the computer via USB /network cable by using software" KoPa Capture Pro".



| | | |
|---|--|---|
| ① | 5G WiFi antenna | 5G WiFi signal transmission to connect the camera to capture images or control the camera |
| ② | USB Output/ Power Supply | Two in one: data transmission and power supply |
| ③ | HDMI output interface | The display device is connected and the image can be displayed, but the image cannot be controlled |
| ④ | Network port | Connects to a computer via a network cable, suitable for wired long distance image transmission |
| ⑤ | USB2.0 interface | Can be connected to a mouse (for controlling KoPa View software), keyboard, USB stick (for storing videos and images) |
| ⑥ | Easy focus with allen key (Only for 0.43X tube lens camera) | Simple and precise focus adjustment for synchronization between eyepiece and monitor |
| ⑦ | USB/OFF/WiFi Working mode switching | Two working modes switching |

Specifications

| | |
|-------------------------------|--|
| Models | CF48 |
| C-mount category | BJ-C-08 |
| With 0.43X tube lens category | BJ-A-08 |
| Physical resolution | 8.3MP |
| Image sensor | SONY IMX678 CMOS |
| Sensor size | 1/1.8" |
| Pixel size | 2μm×2μm |
| A/D conversion bit depth | 12bit |
| Exposure time | 10us~10s |
| Exposure mode | Rolling shutter |
| ISO sensitivity | Equivalent to 100-12800 |
| Spectral response | 400-650nm |
| Exposure capability | Real-time automatic and manual adjustment |
| White balance | Real-time automatic and manual RB adjustment |
| Power supply | DC 5V 2A |
| Video recordings | 3840×2160@60fps 1920×1080@60fps |
| HDMI output | 3840×2160@60fps 1920×1080@60fps |
| USB output | 3840×2160@60fps 1920×1080@60fps |
| Network output | 3840×2160@60fps 1920×1080@60fps |
| Software and App | Windows Software: KoPa Capture Pro, OSD: KoPa View, App: KoPa WiFi Lab |

Accessories

HDMI cable

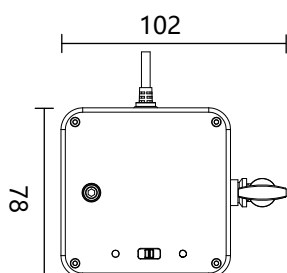


USB mouse

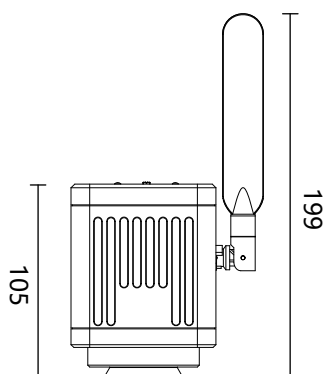


Dimensions(Unit:mm)

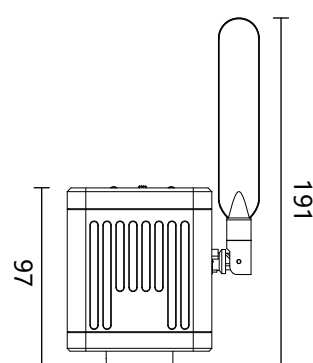
Net weight ≈1kg



Camera with 0.43X tube lens



Camera with C-mount

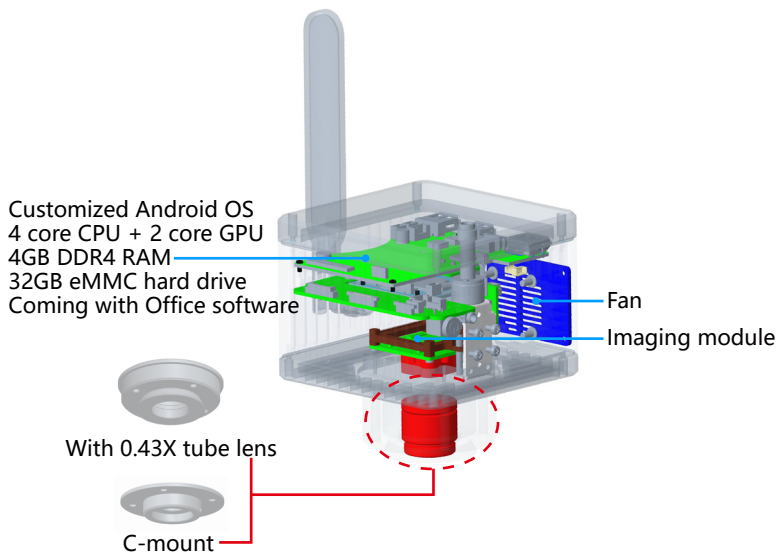


Option C Smart Camera

Build a PC-free Imaging System for Your Microscope



Features & Benefits



- Built-in operating system Android processor RK3399, office suit(Word,Excel, Powerpoint) are preinstalled, no need computer.
- Comes with an imaging app that displays live images upon startup.
- Includes a high-power 0.43X tube lens for a wide field of view.
- 32GB built-in eMMC with support for external U-disk storage for pictures and videos.
- USB interface allows for easy connection of keyboards and mouse.

5G WiFi and DP are simultaneous outputs



5G WiFi output

Compatible with various devices and operating systems, including Windows, iOS, and Android. Mobile devices can access the system by scanning a QR code. connects to PC via WiFi.



DP output

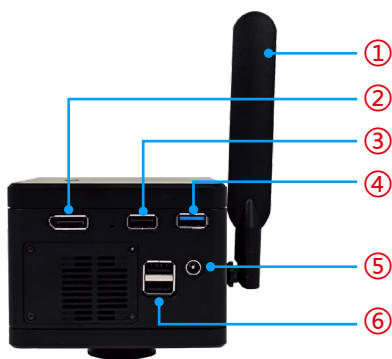
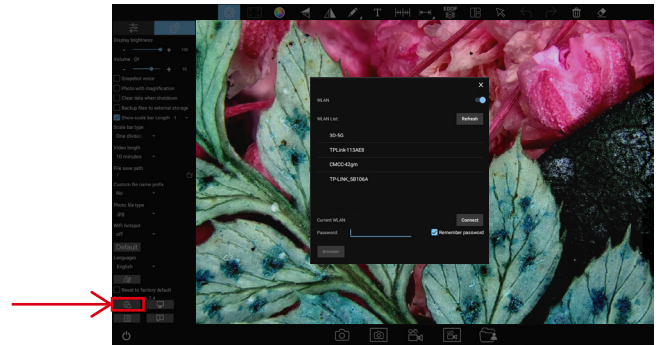
With DP output for display on monitors, TVs and projectors.





Connecting to the Internet

The camera supports wireless Internet connection (only supports 5G WiFi router signal), by entering the password of any 5G WiFi network , you can directly open the browser to access the Internet. This will allow you to take advantage of online features and functionalities directly from your camera.



| | | |
|---|--------------------------------|--|
| ① | 5G WiFi antenna | 5G WiFi signal transmission to connect the camera to capture images or control the camera |
| ② | DP output interface | Transmission via DP cable, connected to a display device |
| ③ | USB3.0 interface | Can be connected to a mouse, keyboard, USB flash drive (for copying videos and images).Or you can use the manufacturer's optional USB to DC5V power cord to power the CX23 |
| ④ | USB2.0 interface | |
| ⑤ | Power input | DC 12V 3A |
| ⑥ | USB2.0 interface | Can be connected to a mouse, keyboard, USB flash drive (for copying videos and images) |
| ⑦ | Headphone and microphone ports | Connect with headset cable for audio output |
| ⑧ | Power switch | Switch on/off |

Specifications

| | |
|-------------------------------|--|
| Models | TE2000 |
| C-mount category | CJ-C-08 |
| With 0.43X tube lens category | CJ-A-08 |
| Physical resolution | 8.3MP |
| Image sensor | SONY IMX678 CMOS |
| Sensor size | 1/1.8" |
| Pixel size | 2 μ m \times 2 μ m |
| A/D conversion bit depth | 12bit |
| Exposure time | 10 μ s~10s |
| Exposure mode | Rolling shutter |
| ISO sensitivity | Equivalent to 100-12800 |
| Spectral response | 400-650nm |
| Exposure capability | Real-time automatic and manual adjustment |
| White balance | Real-time automatic and manual RB adjustment |
| Power supply | DC 12V 3A |
| Video recordings | 3840 \times 2160@30fps 1920 \times 1080@30fps |
| HDMI output | 3840 \times 2160@30fps 1920 \times 1080@30fps |
| USB output | 3840 \times 2160@30fps 1920 \times 1080@30fps |
| Network output | 3840 \times 2160@30fps 1920 \times 1080@30fps |
| Software and App | Windows Software:KoPa Capture Pro,Embedded software:KoPa WiFi Lab AO,App:KoPa WiFi Lab |

Accessories

Power adapter and power cord
(Optional Chinese, American, European, Australian, Korean, British standard etc.)



DP cable

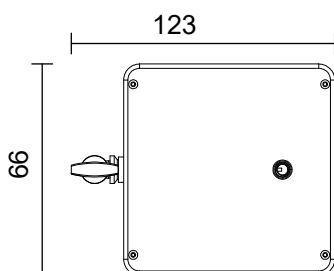


USB mouse and keyboard

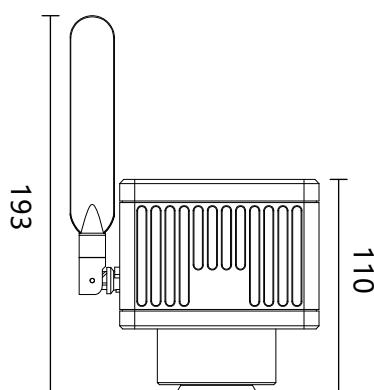


Dimensions(Unit:mm)

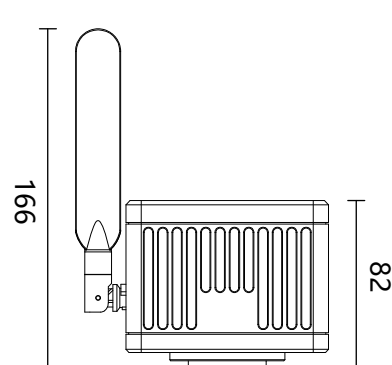
Net weight \approx 1.3kg



Camera with 0.43X tube lens



Camera with C-mount



Option D Smart Display Camera

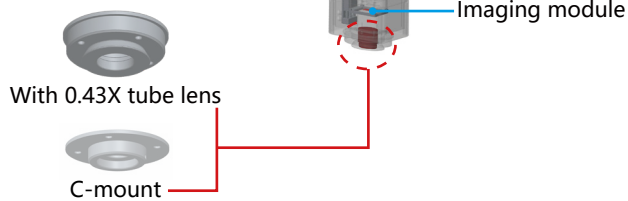
Build a PC-free Imaging System for Your Microscope



Features & Benefits

Customized Android OS
4 core CPU + 2 core GPU
4GB DDR4 RAM
32GB eMMC hard drive
Coming with Office software

Easy focus with allen key
(Only for 0.43X tube lens camera)



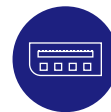
- Built-in operating system Android processor RK3399, office suit(Word,Excel, Powerpoint) are preinstalled, no need computer.
- Integrated with 15.6" high-definition ISP display.
- Comes with an imaging app that displays live images upon startup.
- Includes a high-power 0.43X tube lens for a wide field of view.
- 32GB built-in eMMC with support for external U-disk storage for pictures and videos.
- USB interface allows for easy connection of keyboards and mouse.

5G WiFi and DP are simultaneous outputs



5G WiFi output

Compatible with various devices and operating systems, including Windows, iOS, and Android. Mobile devices can access the system by scanning a QR code. connects to PC via WiFi.



DP output

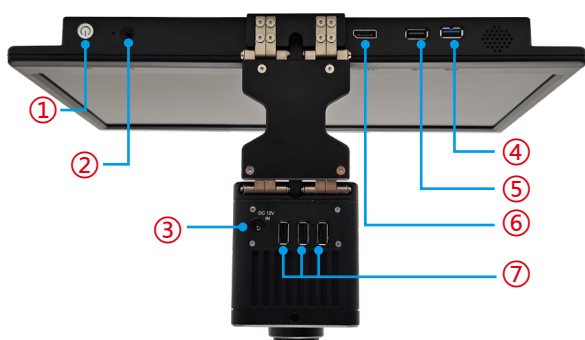
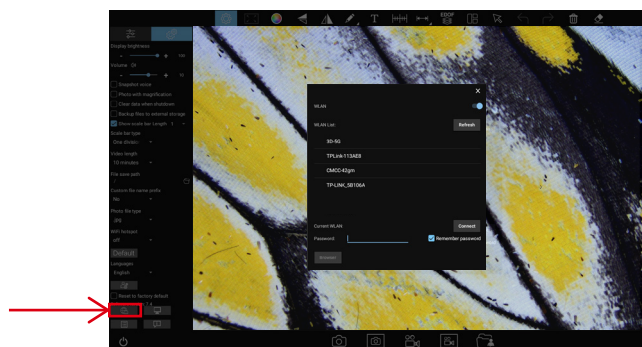
With DP output for display on monitors, TVs and projectors.





Connecting to the Internet

The camera supports wireless Internet connection (only supports 5G WiFi router signal), by entering the password of any 5G WiFi network, you can directly open the browser to access the Internet. This will allow you to take advantage of online features and functionalities directly from your camera.



| | | |
|---|---|---|
| ① | Power switch | Switch on/off. |
| ② | Headphone and microphone ports | Connect with headset cable for audio output. |
| ③ | Power input | DC 12V 3A |
| ④ | USB 3.0 interface | Can be connected to a mouse, keyboard, USB flash drive (for copying videos and images).Or you can use the manufacturer's optional USB to DC5V power cord to power the CX23. |
| ⑤ | USB 2.0 interface | |
| ⑥ | DP output interface | Transmission via DP cable, connected to a display device. |
| ⑦ | USB 2.0 interface | Can be connected to a mouse, keyboard, USB flash drive (for copying videos and images).Or you can use the manufacturer's optional USB to DC5V power cord to power the CX23. |
| ⑧ | 5G WiFi antenna | 5G WiFi signal transmission to connect the camera to capture images or control the camera |
| ⑨ | Easy focus with allen key (Only for 0.43X reduction lens camera) | Simple and precise focus adjustment for synchronization between eyepiece and monitor. |

Specifications

15.6" high color gamut display

| | |
|--------------------------|--|
| Number of pixels | 1920(horizontal) x 1080 (vertical) |
| Pixels arrangement | RGB vertical stripe |
| Colour gamut | 100% (sRGB) |
| Display number of colors | 16.7M(8Bit) |
| Surface treatment | Anti-glare |
| Surface hardness | 3H |
| Viewing angel range | 170 horizontal, 170 vertical |
| Contrast | 800 |
| Brightness | 500cd/m ² (average of 5 points) |

| | |
|-------------------------------|--|
| Models | JX200 |
| C-mount category | DJ-C-08 |
| With 0.43X tube lens category | DJ-A-08 |
| Physical resolution | 8.3MP |
| Image sensor | SONY IMX678 CMOS |
| Sensor size | 1/1.8" |
| Pixel size | 2μm×2μm |
| A/D conversion bit depth | 12bit |
| Exposure time | 10us~10s |
| Exposure mode | Rolling shutter |
| ISO sensitivity | Equivalent to 100-12800 |
| Spectral response | 400-650nm |
| Exposure capability | Real-time automatic and manual adjustment |
| White balance | Real-time automatic and manual RB adjustment |
| Power supply | DC 12V 3A |
| Video recordings | 3840×2160@30fps 1920×1080@30fps |
| HDMI output | 3840×2160@30fps 1920×1080@30fps |
| USB output | 3840×2160@30fps 1920×1080@30fps |
| Network output | 3840×2160@30fps 1920×1080@30fps |
| Software and App | Windows Software:KoPa Capture Pro,Embedded software:KoPa WiFi Lab AO,App:KoPa WiFi Lab |

Accessories

Power adapter and power cord
(Optional Chinese, American, European, Australian, Korean, British standard etc.)

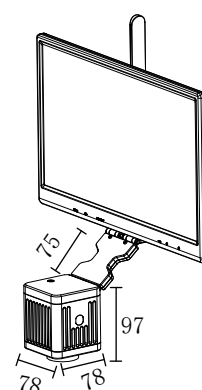
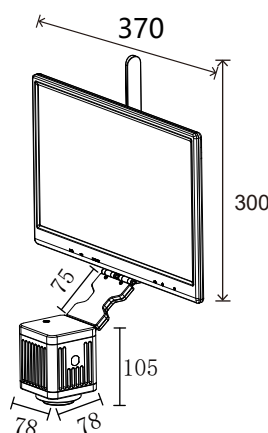


USB mouse
and keyboard



Dimensions(Unit:mm)

Net weight ≈2kg
Camera with 0.43X tube lens Camera with C-mount



Certifications

1. Comply with FCC certification of The US Federal Communication Commission.
2. Comply with European (standard) safety CE certification.
3. Comply with the MIC certification issued by the Ministry of Internal Affairs and Communications of Japan (Electric Wave Method and Electro-Optical Communication Business Law).
4. Comply with JATE certification of Japanese telecommunications law directive.
5. Comply with the “Directive on the Restriction of the Use of Certain Hazardous Substances in Electrical and Electronic Equipment” (RoHS) Directives in accordance with EU legislation.

| Evaluation object | Certification | Certificate File Name & Report | Certificate number & corresponding report number |
|---|-----------------------------|---|--|
| WF01A(5G WiFi 11ac)module Certification | US FCC Report | SZEM180100024801-5G wifi RPT-WF01A FCC Report | SZEM180100024801 |
| | | SZEM180100024802-RT-WF01A FCC Report | SZEM180100024802 |
| | | Appendix A-Photographs of EUT Constructional Details for SZEM1801000248CR-FCC | SZEM1801000248CR |
| | US FCC ID Certification | 2AFO3WF01A_NII-WF01A FCC ID | 2AFO3WF01A |
| | EU CE report | SZEM180100024901 EN301489 RPT-WF01A CE Report | SZEM180100024901 |
| | | SZEM180100024902 WIFI5G RPT-WF01A CE Report | SZEM180100024902 |
| | Japanese MIC Certification | CSRT180084-WF01A Japanese MIC Certification | CSRT180084 |
| | Japanese JATE Certification | CSTT180018-WF01A Japanese JATE Certification | CSTT180018 |

Patented

| Patent category | Patent name | Patent number |
|-----------------------|---|---------------------|
| Design patent | Electronic eyepiece | ZL 2015 3 0193227.8 |
| | Wireless electronic eyepiece | ZL 2015 3 0193223.X |
| | Electronic eyepiece with spectroscopic system | ZL 2019 3 0331144.9 |
| | Microscope (with splitting prism camera) | ZL 2019 3 0717439.X |
| | Microscope with camera | ZL 2019 3 0717442.1 |
| Utility model patents | WiFi microscope eyepiece | ZL 2015 2 0296469.4 |
| | Electronic eyepiece | ZL 2015 2 0426409.X |
| | Wireless electronic eyepiece | ZL 2015 2 0426313.3 |
| | Microscope with displayer | ZL 2019 2 0928962.1 |
| | Electronic eyepiece with splitting prism system | ZL 2019 2 1022863.3 |

Software copyright

| Category | Name of software | Platform | License number |
|--|------------------|----------|----------------|
| Computer software copyright registration certificate | KoPa Capture Pro | Windows | 2021SR1287730 |
| | KoPa WiFi Lab AO | Android | 2021SR1304520 |
| | KoPa WiFi Lab | Android | 2019SR0117768 |
| | | iOS | 2019SR0028558 |
| | KoPa View | Linux | 2024SR1617066 |

KoPa®

GuangZhou Ostec Electronic Technology Co.,Limited

Manufacturer: No.8 West Lane, Jiangcheng Road, Bangjiang East Village,Dalong street, Panyu District, Guangzhou, China.



High-Tech Enterprise certificate number:
GR202344009665



ISO9001 Verification No:00223Q26818R3S

The content of this leaflet has been reviewed by our company at the time of its release. Due to technological development, the actual product is subject to change without notice.

The names of other companies, product names, and trademarks **OLYMPUS** **Nikon** **Leica** **ZEISS** **Apple** **HarmonyOS** **W** **Q** **du** recorded on this leaflet are owned by their companies