

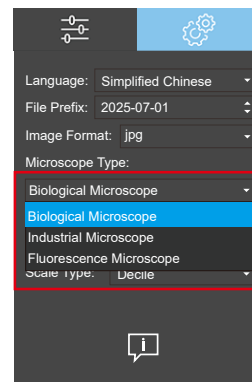
# KoPa View

## *Software Introduction*

## Dedicated yet Versatile – Adapts seamlessly to diverse microscopy needs

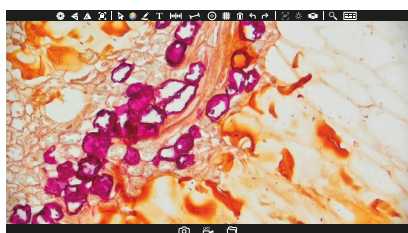
### Multi-Mode Imaging Support:

- Biological Microscope Image Mode
- Industrial Microscope Image Mode
- Fluorescence Microscope Image Mode

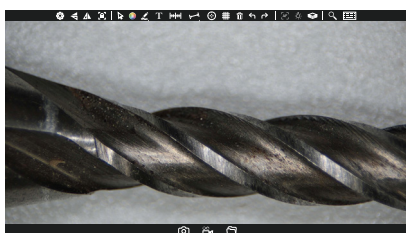


Auto-Matched Precision: Automatically selects the optimal imaging mode for your microscope, delivering sharp, accurate results.

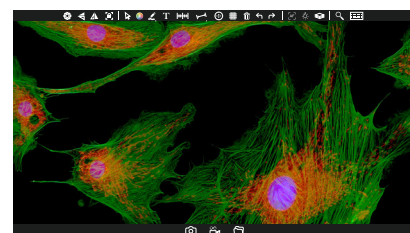
Biological Microscope Image Mode



Industrial Microscope Image Mode

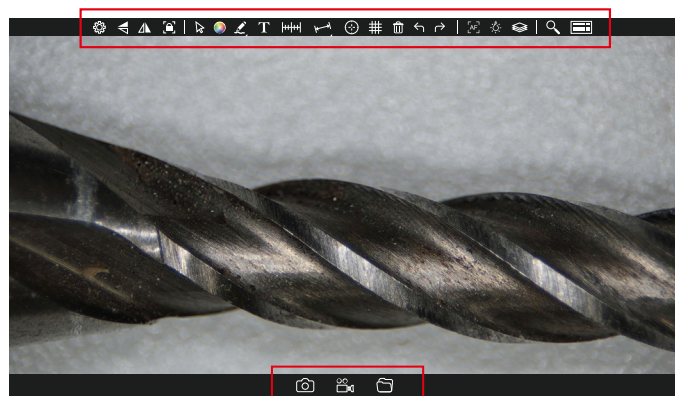


Fluorescence Microscope Image Mode



## User-Friendly Design

- Intuitive Icon-Driven Interface – Easy navigation with full graphical guidance.
- Real-Time Image Adjustment – Fine-tune brightness, contrast, and more.
- On-screen measurement & annotation.
- Flexible Focus Options: Manual / Single-Auto / Continuous-Auto Focus.
- Capture high-quality photos & videos, advanced multi-channel fluorescence image combine.
- Practical Tools: Software-based illumination management.

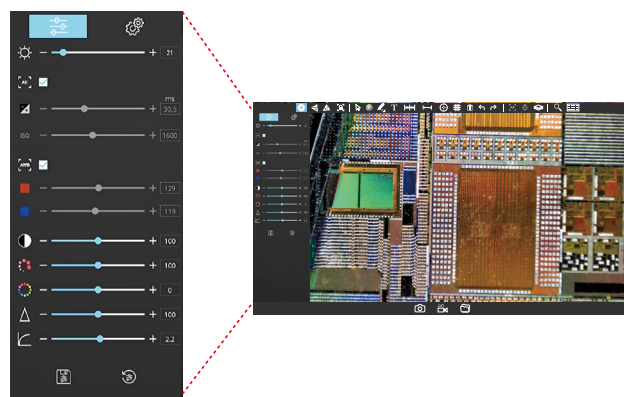


### Real-time image parameter adjustment

- |                  |            |
|------------------|------------|
| Target Luminance | Hue        |
| Exposure         | Saturation |
| Gain             | Sharpnes   |
| White Balance    | Gamma      |
| Contrast         |            |

#### Quick Operations:

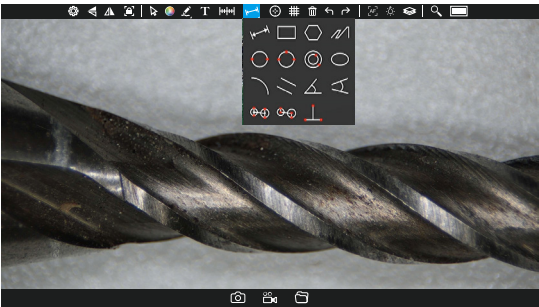
- One-click Restore All Defaults
- Reset Individual Parameter
- Save Custom Parameter Presets



# Utility Tools

## Comprehensive Measurement Tools

Straight lines, circles, rectangles, angles, parallel distances, radians, three-point perpendiculars, four-point angles, ellipses, concentric circles, etc., to meet a variety of needs.



## Calibration

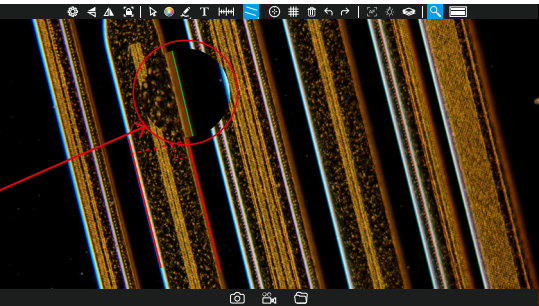
Shutdown to save calibration data, scale bar, crosshair, gridline assistance.

## Auto Edge Detection

Rapidly identifies and locates edges of measured objects for precise results.

## Magnifier Tool

Local Zoom - Enhances visual details for precise inspection  
Edge Detection Assist - Helps users accurately place measurement anchor points during auto-edge detection.



## Exclusive Grid Measurement

### Custom Grid Configuration

Freely adjust grid quantity and spacing; Visual Customization: Set line width/color, toggle tolerance line display;

### Preset Management

Add, import, and manage predefined parameter sets.

### Custom Style Settings

Adjustable Grid Lines: Modify spacing line color/width;  
Endpoint Customization: Flexibly configure line terminal length.

### Calibration Toolbar Features

Touch Dropdown Menu – Quick access to calibration tools;  
Right-Click to Hide – Temporarily conceal selected measurement results;  
Unlimited Vertical Line Drawing – Double-click to complete.





## Depth Fusion Modes

### Manual Fusion

Mouse Wheel Control: Adjust scan range precisely for targeted area fusion.

### 1/3 Travel Fusion

Scans from initial position to 1/3 of max physical range.

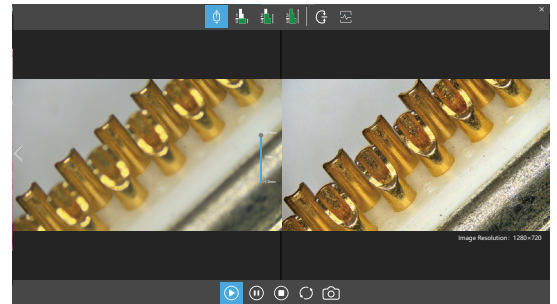
### 2/3 Travel Fusion

Covers initial to 2/3 of maximum travel distance.

### Full-Range Fusion

Complete scan across the camera's entire physical movement.

### Return to the designated interface position



## Manual / Single-Auto / Continuous-Auto Focus

(This feature requires motorized models)

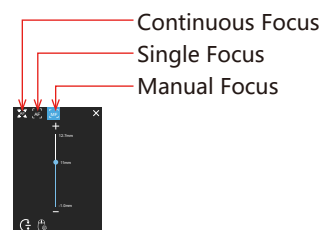
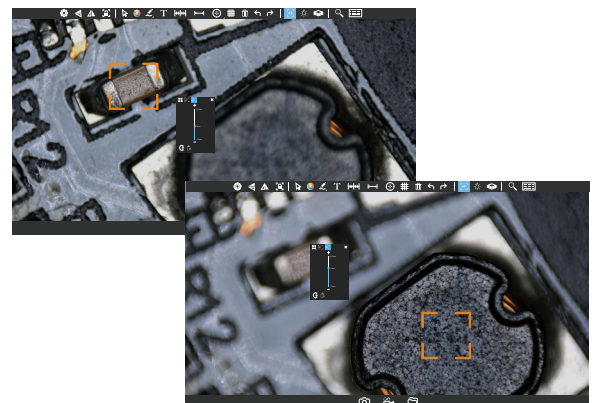
### Continuous Auto Focus

Instant Clarity Lock - Automatically maintains optimal focus in real-time, and reduces inspection time.

### Single Auto Focus

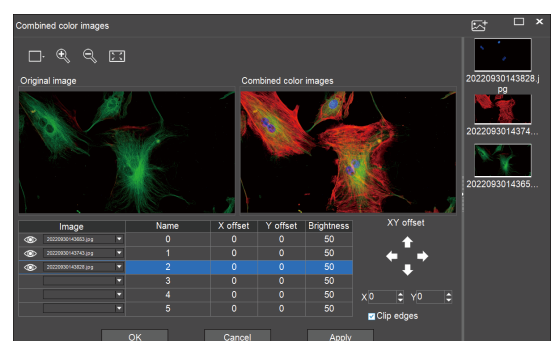
### Manual Focus Mode:

Precision Wheel Control – Fine-tune focus via mouse scroll wheel for challenging surfaces: Uneven textures (e.g., solder joints, coatings), Reflective/multi-layer structures, Micro-crack inspection  
Adjustable Sensitivity – 6-level mouse response tuning (1=Fine → 6=Coarse)



## Capture high-quality photos & videos, advanced multi-channel fluorescence image combine.

Fluorescence Image Stacking – Seamlessly overlay multiple fluorescent channels.  
Color reproduction: presents the closest true color performance to the sample.



## Software-Controlled Lighting (CE210T Exclusive)

### Precision Illumination Management

CE210T Series with Four-Zone Light Source (Near-coaxial lighting, Diffuse illumination) are 100% Software Adjustable - All parameters controllable via KoPa View interface.

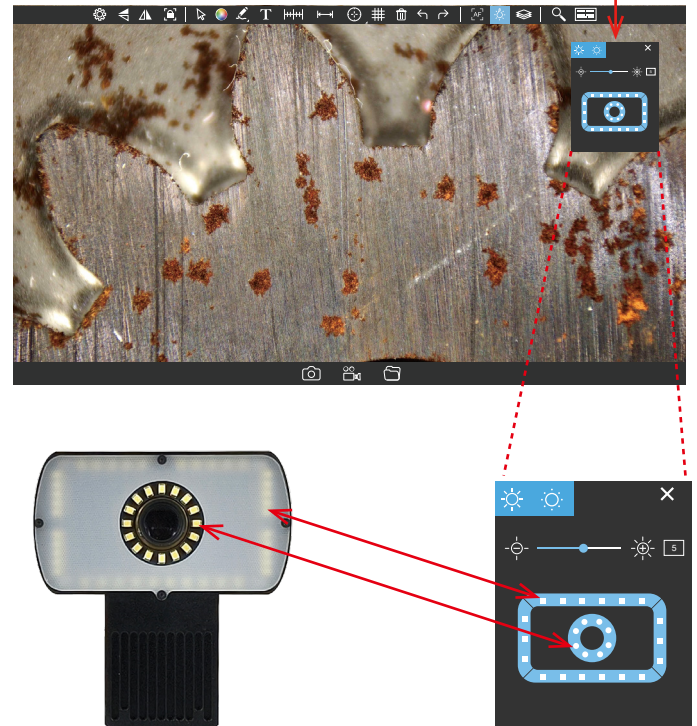
### Flexible Four-Zone Illumination

Independent control of each zone ,mix & match settings to highlight sample details,real-time preview of lighting effects.

### 1-30 levels of brightness adjustment

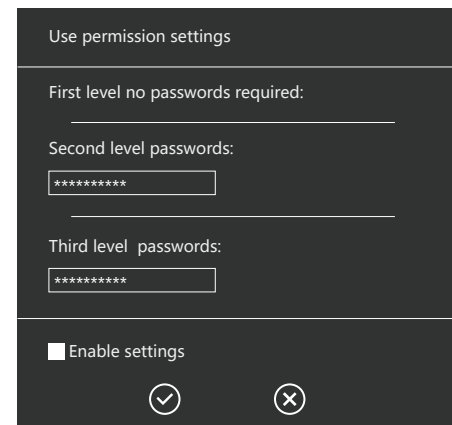
Optimal Imaging for Any Material,seamless Dimming (1-30 levels) adapts to:  
High-reflectivity surfaces (e.g. polished metals),  
Low-contrast specimens (e.g. biological tissues).

Lighting control through software



## Competence Tiered Access Control

3-Level Competence Management: Prevents unauthorized setting changes



## Multi-Language Support

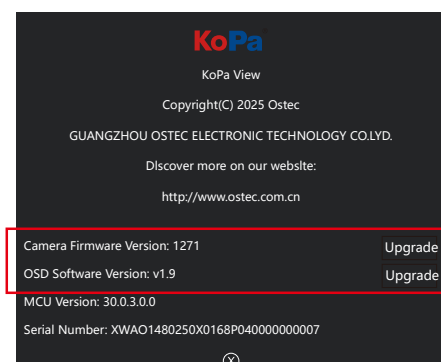
Instant Switching between 5 languages:

- Chinese (Simplified/Traditional)
- English
- Japanese
- Español
- Português



## Easy Upgrade

Embedded software and camera firmware can be upgraded via USB flash drive.





GuangZhou Ostec Electronic Technology Co.,Limited

Manufacturer: No.8 West Lane, Jiangcheng Road, Bangjiang East Village,Dalong  
street, Panyu District, Guangzhou, China.

<https://www.ostec.com.cn/>



High-Tech Enterprise certificate number:  
GR202344009665



ISO9001 Verification No:00223Q26818R3S

The content of this leaflet has been reviewed by our company at the time of its release. Due to technological development, the actual product is subject to change with notice.

The names of other companies, product names, and trademarks **OLYMPUS** **Nikon** **Leica** **ZEISS** **Microsoft** **Apple** **HarmonyOS** **WU** **du** recorded on this leaflet are owned by their companies