

# KoPa Capture Pro for Windows

## *Software Introduction*

## KoPa Capture Pro – Plug-and-Play Windows Software

KoPa Capture Pro is a ready-to-use Windows-compatible software that requires no additional drivers. It supports the full range of KoPa cameras from 8.3MP to 12.0MP, 20.0MP, and beyond, offering versatile connectivity options including USB, Wi-Fi, and Ethernet. Enjoy greater flexibility and convenience in image transfer with a seamless, multi-connection experience.

## Recommended System Requirements

- Operating System: Microsoft Windows 10 (64-bit) or later
- CPU: Intel Core i7 (10th Gen) or higher
- Storage: 512GB SSD or larger
- RAM: 16GB or more
- Graphics: Integrated or dedicated GPU (Nvidia RTX 2060 or better recommended)
- Wired Network: 10/100/1000M Gigabit Ethernet
- Wireless Network: 5G Wi-Fi (IEEE 802.11ac supported).

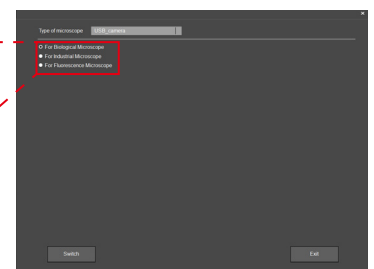
Windows PCs can connect to the camera via USB or 5G Wi-Fi for seamless high-definition image streaming.

## Dedicated yet Versatile – Adapts seamlessly to diverse microscopy needs

### Multi-Mode Imaging Support:

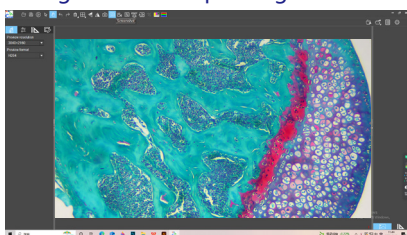
- Biological Microscope Image Mode
- Industrial Microscope Image Mode
- Fluorescence Microscope Image Mode

- For Biological Microscope
- For Industrial Microscope
- For Fluorescence Microscope

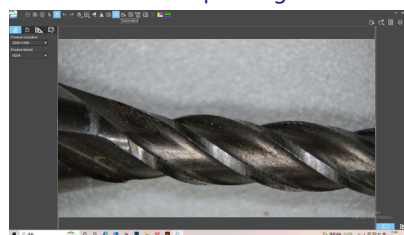


Auto-Matched Precision: Automatically selects the optimal imaging mode for your microscope, delivering sharp, accurate results.

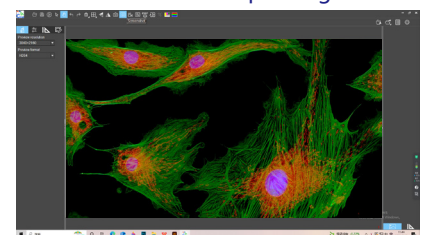
Biological Microscope Image Mode



Industrial Microscope Image Mode



Fluorescence Microscope Image Mode



## Image Property Adjustment

KoPa Capture Pro provides full control over image optimization with support for:

Brightness & Exposure, Gain & White Balance, R & B Parameters adjustment, Contrast, Chroma & Saturation, Sharpness & Gamma.

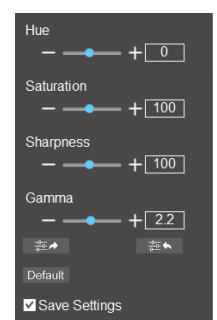
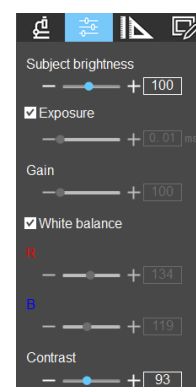
### Quick & Smart Controls

One-Click Reset – Instantly restore all settings to default.

Individual Parameter Reset – Revert single settings without affecting others.

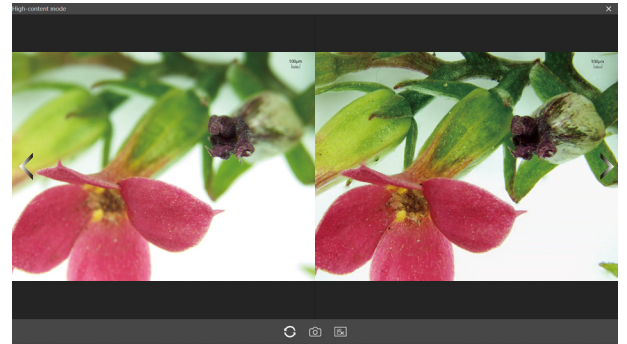
Custom Presets – Save your preferred configurations for quick access.

Import/Export Settings – Easily transfer image parameters across devices.



## Multi-Focus Image Fusion

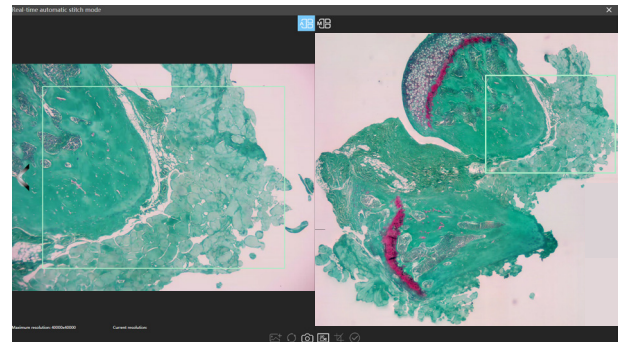
Overcoming the physical constraints of conventional microscopy, our solution:  
Intelligently captures in-focus details across multiple focal planes with simple focus adjustment  
Seamlessly merges images to produce single-frame, all-in-focus HD results  
Features dual-output storage: preserves both original data and fused images in one acquisition



## Auto-Stitching Functionality

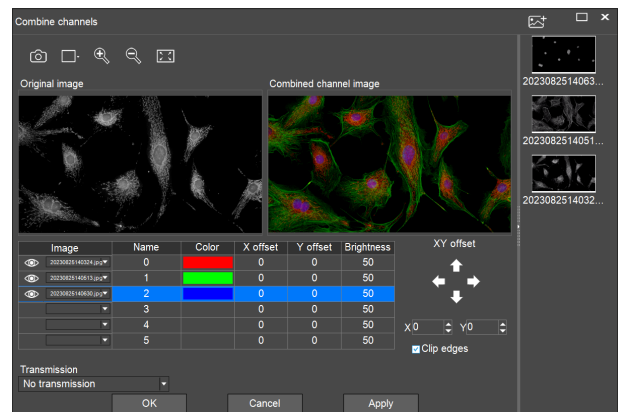
Leveraging advanced stage displacement detection and real-time imaging algorithms, our solution:

- Automatically captures and seamlessly stitches consecutive images during XY-axis movement
- Generates high-resolution panoramas of complete specimens with precision
- Eliminates static image stitching - Enables effortless, efficient large-area observation



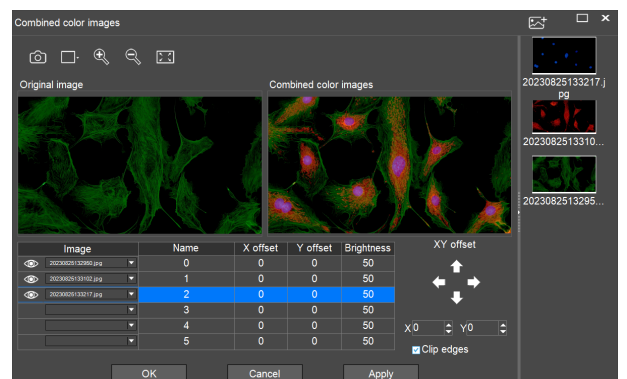
## Fluorescence Channel Configuration

One-click channel selection, real-time multi-channel overlay.



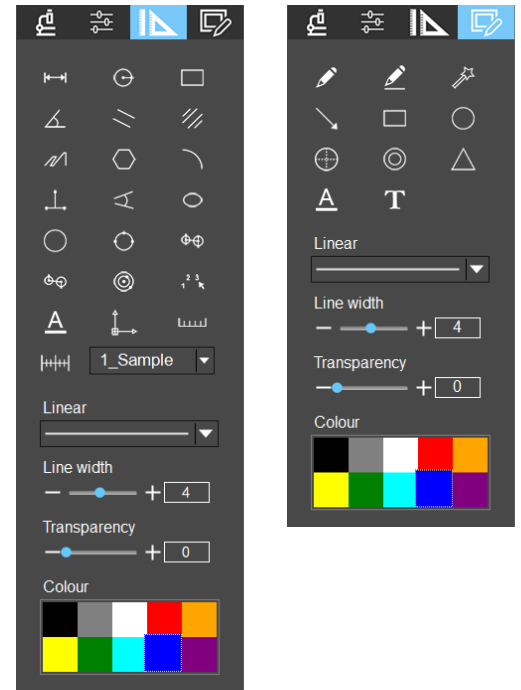
## Multi-Channel Fluorescence Image Fusion

Automatically combines multiple fluorescent channels into a single composite image, true-color representation of all markers.



## Practical Measurement & Annotation Tools

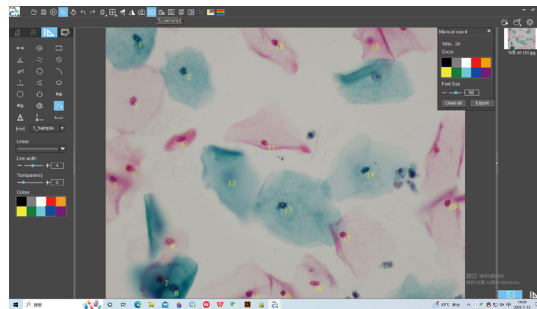
- **Comprehensive Measurement Suite:**  
Linear: Distance, angle, parallel spacing  
Circular: Radius, diameter, concentric circles  
Polygonal: 3-point perpendicular, 4-point angle  
Curvilinear: Arcs, elliptical measurements
- **Calibration Management:**  
Flexible Calibration: Add/edit/delete calibration standards  
Import/Export: Share calibration profiles
- **Scale Bars:** Customizable units (m/mm/cm) and lengths
- **Scale bar display:** can be superimposed onto the image and automatically saved when taking a picture.
- **Annotation tools:** pencil (free drawing), highlighter (highlight annotation), straight line, rectangle, ellipse, isosceles triangle, concentric circles, single-arrow straight line (supports angle adjustment).



## Image Processing and General Settings

### Image Processing

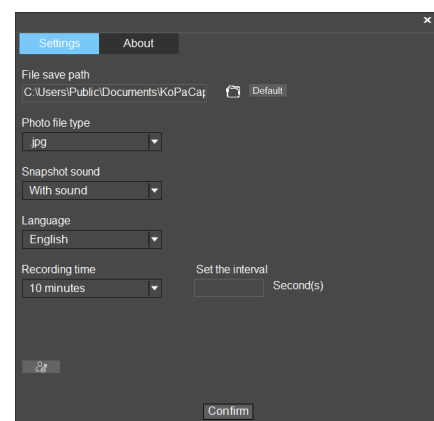
- **File Management:** Open/Save;
- **Real-time Transform:** Horizontal/Vertical Flip + Mirror Mode;
- **Image Editing:** Select/Drag/Erase Tools;
- **Operation History:** Undo/Redo;
- **Multi-screen Comparison:** Supports 1/2/4-screen simultaneous viewing modes (Dynamic and Static Pictures);
- **Cell Counting:** Manually label nuclei to generate a quantity report;
- **Multimedia Capture:** Take pictures, screenshot, video recording, screen recording.



| Measure    |          |          |           |
|------------|----------|----------|-----------|
| Object     | X        | Y        | Intensity |
| 1          | 346      | 124      | 50        |
| 2          | 898      | 485      | 63        |
| 3          | 302      | 801      | 93        |
| 4          | 274      | 1558     | 70        |
| 5          | 71       | 1995     | 61        |
| 6          | 707      | 2360     | 108       |
| 7          | 629      | 2775     | 51        |
| 8          | 751      | 2884     | 19        |
| 9          | 820      | 1238     | 85        |
| 10         | 1877     | 149      | 64        |
| 11         | 1790     | 1381     | 99        |
| 12         | 1344     | 1665     | 117       |
| 13         | 1970     | 1958     | 62        |
| 14         | 1602     | 2528     | 65        |
| 15         | 1961     | 2925     | 71        |
| 16         | 2301     | 2821     | 103       |
| 17         | 2628     | 2278     | 75        |
| 18         | 2884     | 1574     | 47        |
| 19         | 3894     | 1924     | 73        |
| 20         | 2940     | 149      | 82        |
| Statistics |          |          |           |
| Item       | X        | Y        | Intensity |
| Min        | 71       | 124      | 19        |
| Max        | 3894     | 2925     | 117       |
| Range      | 3733     | 2804     | 98        |
| Sum        | 29895    | 33874    | 1455      |
| Mean       | 1494.75  | 1693.7   | 72.75     |
| Variance   | 1049157  | 886572.6 | 527.4875  |
| Std.Dev.   | 1024.284 | 941.5798 | 22.9671   |
| Sample     | 20       |          |           |

### General Settings

- **File Save Path:** optional file save path;
- **Multi-format Output:** .jpg / .bmp / .tiff / .png;
- **Language Switching:** Simplified Chinese, English, Traditional Chinese, Japanese, Русский, Portuguese, Spanish
- **Photo Mode:** audible/silent shutter ;
- **Recording Duration:** 10/30/60minutes (customizable);
- **Intelligent Snapshot:** setable interval time (1s~10min);



**KoPa**<sup>®</sup> GuangZhou Ostec Electronic Technology Co.,Limited

Manufacturer: No.8 West Lane, Jiangcheng Road, Bangjiang East Village,Dalong street, Panyu District, Guangzhou, China. | <https://www.ostec.com.cn/> |



High-Tech Enterprise certificate number:  
GR202344009665



ISO9001 Verification No:00223Q26818R3S

The content of this leaflet has been reviewed by our company at the time of its release. Due to technological development, the actual product is subject to change without notice.

The names of other companies, product names, and trademarks **OLYMPUS** **Nikon** **Leica** **ZEISS** **Apple** **Android** **HarmonyOS** **W** **O** **du** recorded on this leaflet are owned by their companies